

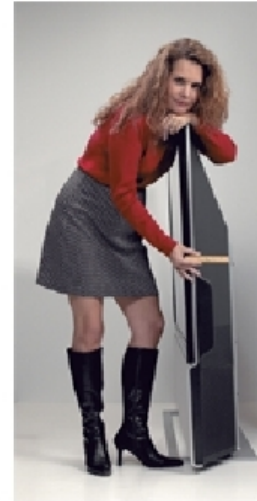
RCA

SCENIUM



HD50THW263

50" (Diagonal) 16x9 HDTV with DLP™ Technology and Integrated ATSC Tuner



Features

HD2+ w/ DLP™ Light Engine (Digital Light Processing™) - 16.7 Million Colors - Twice the contrast of most other microdisplay technologies.

Digital Cable Ready with Integrated High Definition Tuner and Off-Air HD Tuner

Digital Hi-Pix™ Picture Systems with TruScan Digital Reality™ Intelligent Signal Processing - "Because the Picture Intended Should be the Picture Presented"

HD Connectivity with HDMI™ and 2-Way DTVLink

CinemaScreen™ Floating Picture Screen

NetConnect™ - Ethernet with Microsoft Win CE2* Operating System and Internet Explorer2* (IE) Web Browser

3D Y/C Digital Frame Comb Filter

Benefits

Latest DLP technology paired with RCA Scenium proprietary bit sequences produce incredibly clear pictures that are nothing short of stunning.

Delivers cable-ready HD with CableCARD™ slot and off-air HD reception of digital high definition broadcasts without the need for a separate ATSC or digital cable box.

Synergistically optimize picture performance by synchronizing advanced signal processing, display technologies, HD connectivity and CinemaScreen™.

Dual SYNCROSCAN™ PLUS component inputs. HDMI™ for uncompressed digital signals. Dual FireWire¹¹ connections w/2-way DTVLink for component networking.

The black borderless screen enables viewers to become immersed in the action giving the images more vibrance.

Capable of surfing the internet and watching TV simultaneously. Can network with the home PC to display photos directly from the computer's hard drive.

Separates the signal into separate components eliminating dot & edge crawl while providing better transitions between scene changes.

RCA

SCENIUM

BRAND

BRAND	RCA Scenium
-------	-------------

PICTURE

Screen Size - diagonal (inch)	50
Category	DLP™ HDTV
Aspect Ratio	16x9
CRT / Light System	HD2+, InFocus® DLP™ Light Engine
Hybrid Lens System	Proprietary
1st Surface Reflective Mirror	Yes
Screen Type	High Gain, High-Resolution
Anti-Reflective Screen	Yes
Video Noise Reduction	Adaptive, Recursive
Progressive Scan	TruScan Digital Reality™
Scan Rate Converter	TruScan Digital Reality™
Comb Filter	3D Y/C Digital Frame
3:2 Pull Down	Reverse (TruScan Digital Reality™)
Adjustable Color Temp	Yes
Dynamic Color Stretch Circuitry	Yes
Contrast Expand (B&W Stretch)	Yes - Off/Low/High
Format Control	Yes
Picture Presets	Vibrant, Natural, Cinematic, Personal
Viewing Angle	160 degrees
Horiz Resolution (Picture Width)	1280 x 720p Fixed Pixel
Picture Power (watts)	150 / 180 (Lamp Power)
Wide Band Video Amplifier	Yes

SOUND

Sound Type	Brdcst Str w/dbx³ Noise Reduction
Second Audio Program (SAP)	Yes
Audio Processor	SRS Labs TruSurround XT™¹*
Tone Control	7-Band Graphic Equalizer
Balance Control	Yes
Front Speakers (number)	4
Fully Enclosed Speaker System	Yes
Total Watts	60 (15/Chan +Subwoofer)
Integrated Subwoofer	Yes - 30 Watts
Channels / Watts	2 Channels, 15 Watts Per
Sound Logic™ Audio Leveler	Yes
Sound Presets	7 Modes + Personal
Dolby Digital² Pass-Through	Yes

RECEPTION

Tuning Capability	NTSC/ATSC/DCR
Digital Cable/Satellite Connections	FireWire¹¹ / HDMI™ / HD Component
Digital Cable Ready	Yes (DCR)

CONVENIENCE

Auto Channel Search	Yes
Channel Labeling	Auto (via EPG data)
Commercial Skip	Yes
Interactive Set-up w/ Menus	Yes
Integrated Web Browser²²	Yes - WIN CE v4.1 with IE v6.0²²
Lighted Control Panel	Back-lit Touch Sensor
Multilingual On-Screen Display	English/French/Spanish
One-Button Launch for Inputs	Yes - Auto Tune
One-Touch DVR Record	Yes - DVR Required
Parental Control (V-Chip)	Yes
Pic Memory Presets for Vid Inputs	Yes
Picture Freeze	Yes
Picture Reset	Yes
Picture-in-Picture	Twin Tuner (Analog Only)
Power ON Indicator	Blue LED
Timers	Clock/Sleep/Turn-On

REAR CONNECTORS

RF Input (Antenna/Cable)	2
Audio/Video Inputs (Composite)	2 L&R Audio, 2 Video
S-Video Input	2 - Auto-Detectible
Component Video Input (YPrPb)	2 - SYNCROSCAN™ PLUS³³
HDMI (High Def Multimedia Interface)	1 for 720p, 1080i, 480p
Sub Woofer Output	Yes - RCA Phono
Audio Outputs (Type)	1 Set, Switchable (Fixed/Variable)
A/V Outputs (Composite)	1 Set - L&R Audio + Video
Audio Output (Coaxial/Optical)	SP-DIF (Optical)
IEEE1394 Connector	2 FireWire¹¹ w/2-Way DTV Link
Broadband Conn (Ethernet RJ45)	Yes
Gold Jacks	Yes
Center Chan / Matrix Surround Output	Yes - 3 RCA Jacks
Wired IR Control Input	Yes - 1

TTE TECHNOLOGY, INC.
10330 N MERIDIAN ST
INDIANAPOLIS, IN 46290

HD50THW263



PROFILES

Technical Specifications

SPECIFICATIONS

Color, Overall (Screen Frame for PTVs)	Gloss Black
Color - Center Panel (PTVs)	Island Silver
Color - Speaker Grill (PTVs)	Island Silver
Color - Back	Black
Product Size (WxHxD) inches	See Below
Packaging Size (WxHxD) inches	59.02 x 50.79 x 23.70
Weight: Product/Packaged, lbs	116 (without base) / 205
Base Weight	52

REMOTE CONTROL

Model Number	RCN615TNEM1
Type	Universal 6-Device Learning
Backlit	Yes

INCLUDED ACCESSORIES

Instruction Book Languages	English/French/Spanish
Infrared Keyboard	Model KBR755TA1

OPTIONAL ACCESSORIES

Stand / Component Cabinet	RTF50THW263, RTF5061W262 / -
Digital Video Recorder	DVR2080 or DVR2160
Wall Mount Bracket	PSWM263K2
CableCARD™ (Scrambled DCR Services)	Available from Cable Srv Provider

Product Size (WxHxD):

Without Base: 52.6 x 41.46 x 6.85
With Base: 52.6 x 42.72 x 12.8

CableCARD is a trademark of Cable Television Laboratories, Inc.

DLP, Digital Light Processing and the DLP logo are trademarks of Texas Instruments.

HDMI, the HDMI logo and High-Definition Multimedia Interface are trademarks or registered trademarks of HDMI Licensing LLC

InFocus is a registered trademark of InFocus Corporation.

NetConnect is a trademark of INMAC Corp.

1* - SRS, TruSurround, TruSurround XT and the SRS Logo are registered trademarks of SRS Labs, Inc.

2 - Dolby, Dolby Digital, and Virtual Dolby are registered trademarks of Dolby Laboratories Corp

2º - Requires monthly fee for broadband or cable modem subscription. May not be available in all areas.

2* - WIN CE and Internet Explorer (IE) are registered trademarks or trademarks of Microsoft Corporation in the United States and/or other countries.

3 - dbx is a registered trademark of Carillon Electronics Corporation.

3ª - SYNCROSCAN PLUS component inputs automatically detect video formats 720p, 1080i, 480p and 480i without the need for consumer intervention.

11 - FireWire and the FireWire symbol are trademarks of Apple Computer, Inc., registered in the U.S. and other countries. The FireWire logo is a trademark of Apple Computer, Inc.

©2004 Thomson Inc. Trademark(s) ® Registered Marca(s) Registrada(s)

Photos and features subject to change without notice. Illustration of product finish may vary from actual color.

Revised 8/4/04